
FUNCTIONS AND POSSIBILITIES

- Narrow profiles 20 mm
- Wide profiles for modular locks 85 mm
- Wide profiles 130, 180 and 260 mm
- Finger trap gasket
- Burglary resistance up to class 3 acc SS
- Arches and round windows
- Fire resistance up to E 90 / E 120
- Fire-resistant sliding door up to E 30
- 4 m height wall sections up to E 60

INTERIOR SECTIONS

Profile system in steel, SP 35000, and stainless steel acid-resistant quality EN 1.4404, SP 95000, for glazed door and sliding door sections, and wall and window sections in offices and shopping centres, airports, banks, schools, hospitals, service homes, etc.

These are modern profile systems, which means they are flexible, secure and stable. The system gives great possibilities for variations and is tested and approved for fire resistance when used with narrow (20 mm) and wide profiles (85, 130, 180 and 260 mm), finger trap gaskets, round windows and arches. The system includes wide profiles (85 mm) adapted for modular locks.

The systems satisfies the architectural requirements for flat in- and outside surface of the door and wall sections due to the profile's special design with a track for the rubber gasket.

SAFETY AND SECURITY

The sections are tested and have *Technical Approvals* as issued by SITAC for fire resistance class up to E 90 / E 120. Tests have been performed with increased height and width measurements, e.g. wall sections up to 4 m high according EN 1364-1. Tests have also been made according *ASTM / NFPA / UL* standards. Documentation is, e.g. available for 60/0 according *BS 476:22* as well as E 30 in *Tyypihyväksyntäpäätös* issued by Ympäristöministeriö and VTT. Stålprofil systems SP 35000 / SP 95000 is approved to be used for burglary-resistant sections up to class 3 as per SS 81 73 45.

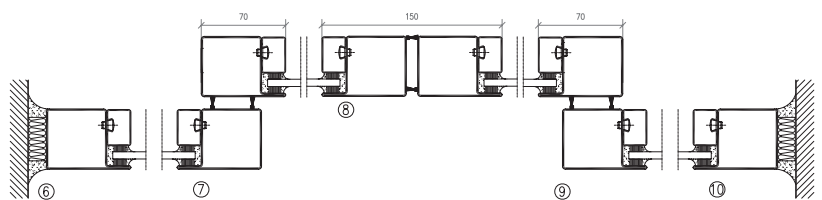
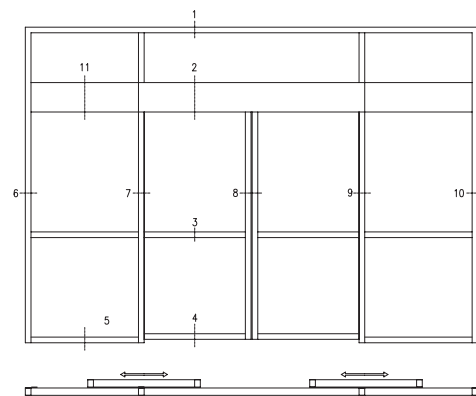
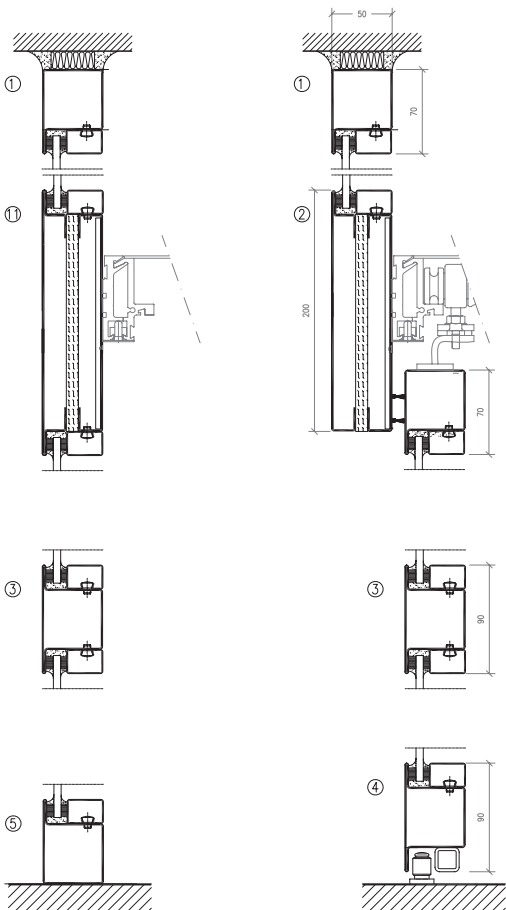
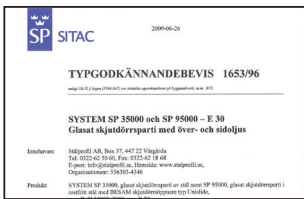
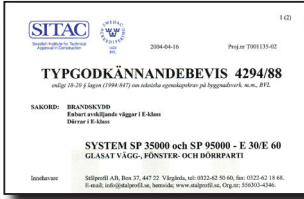
INSULATED SYSTEMS, WITH SAME MEASUREMENTS

Stålprofil system SP 35000/SP 95000 also includes profile system SP 55000/SP 955000, which features a thermal bridge, and fire-insulated profile system SP 75000/SP 975000. These systems have the same measurements as SP 35000 with a depth of 50 mm.

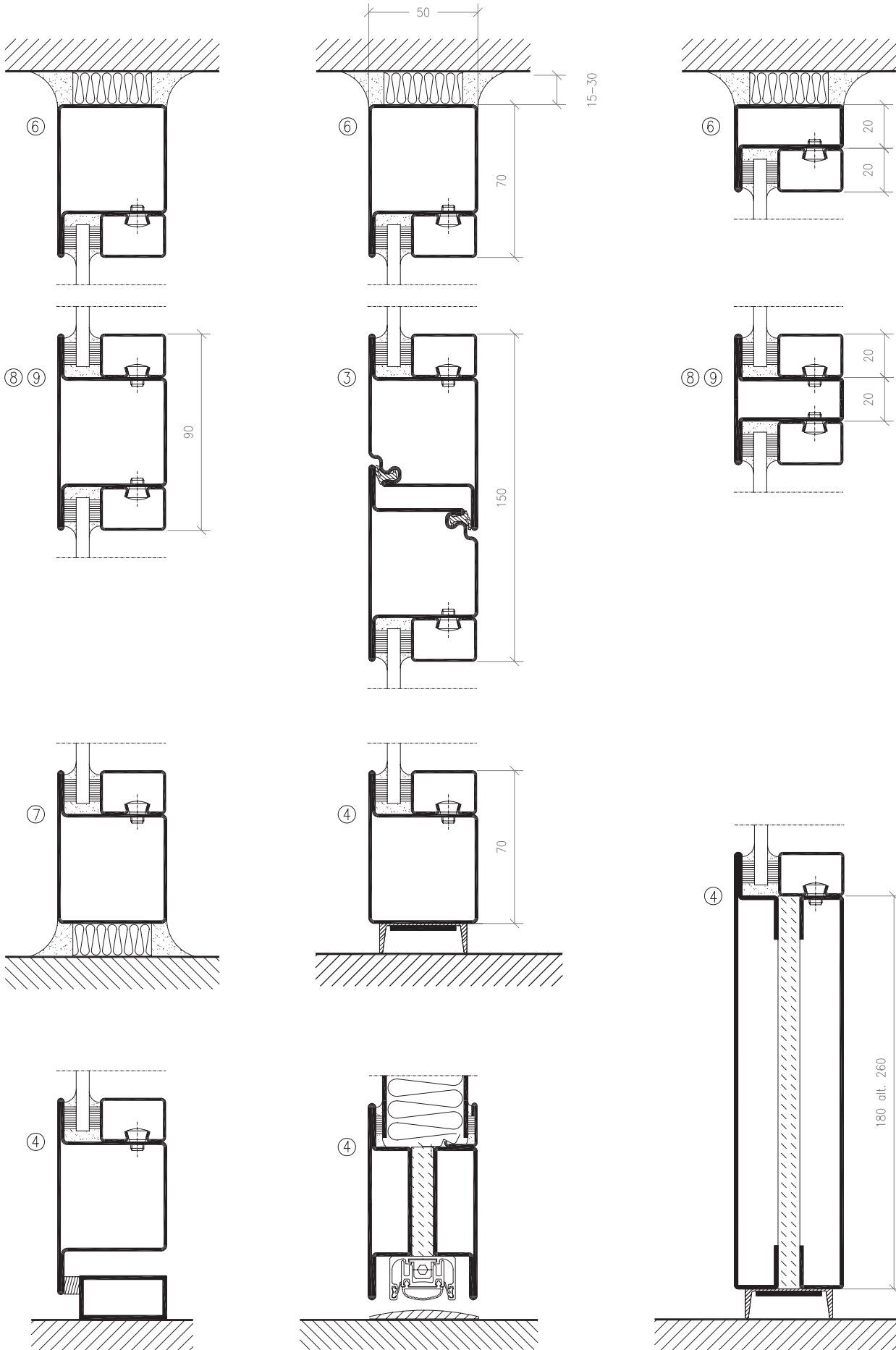


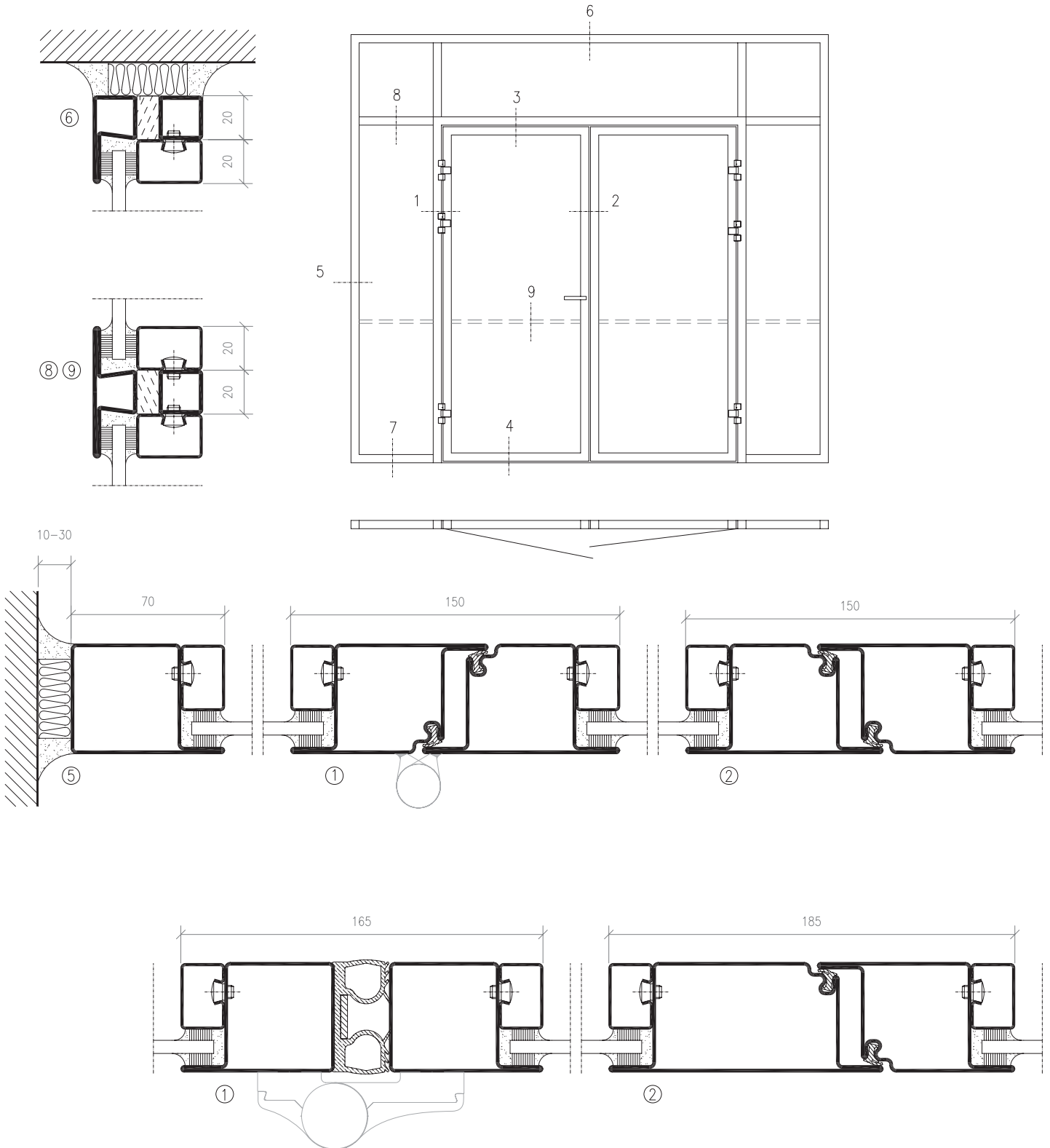


PROFILE SYSTEM SP 35000 / SP 95000

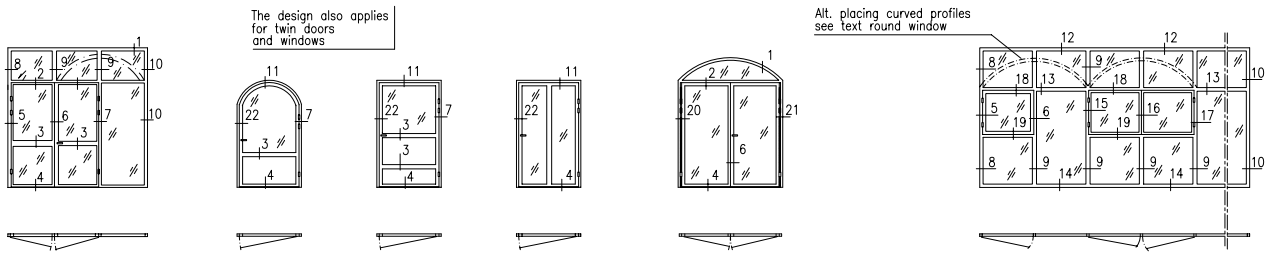


	Vers. 1	Skala 1:3	Rit.Nr. 3-350-SDD-LR0
	Titel SP 35000 / SP 95000		



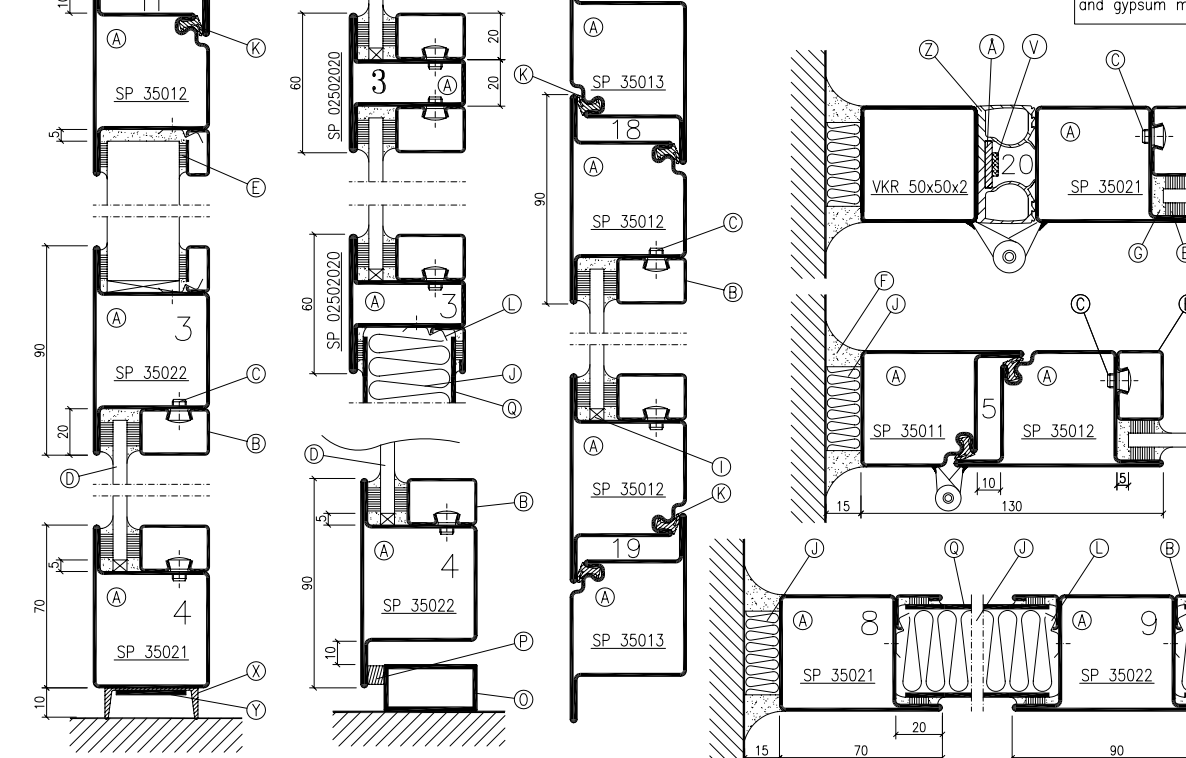
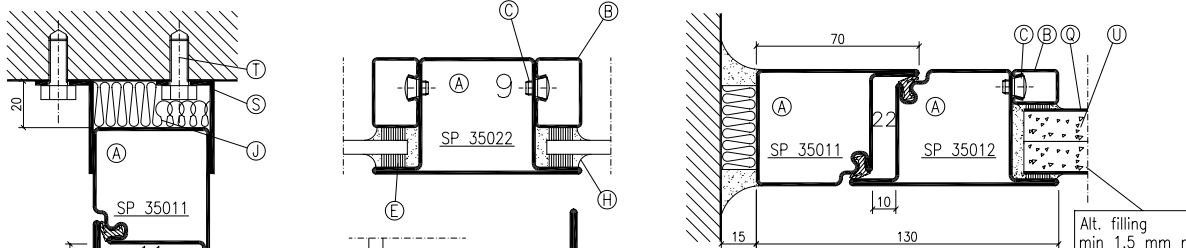
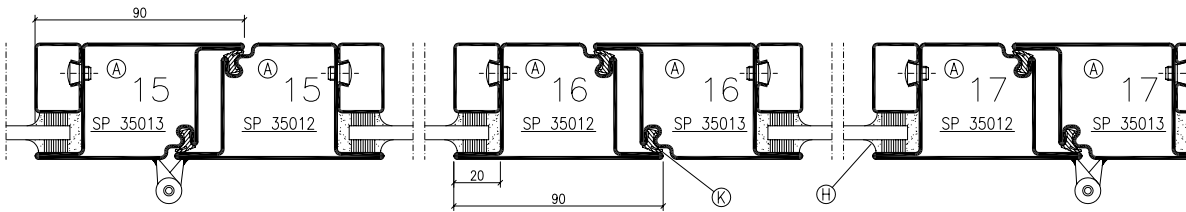
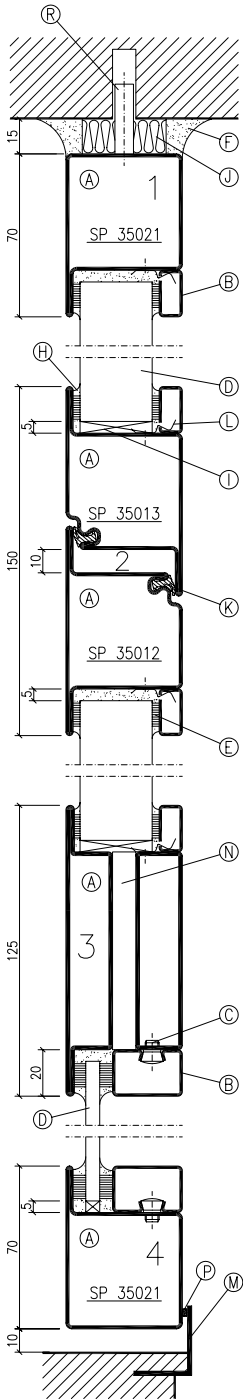
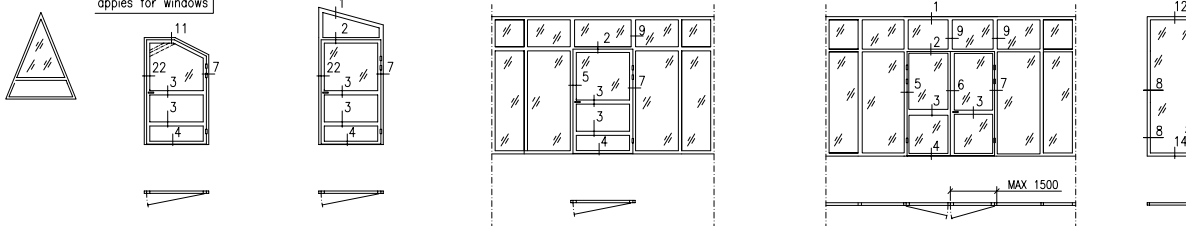


	Vers. 1	Skala 1:2,5	Rit.Nr. 3-350-SDD-LR0
	Titel SP 35000 / SP 95000		

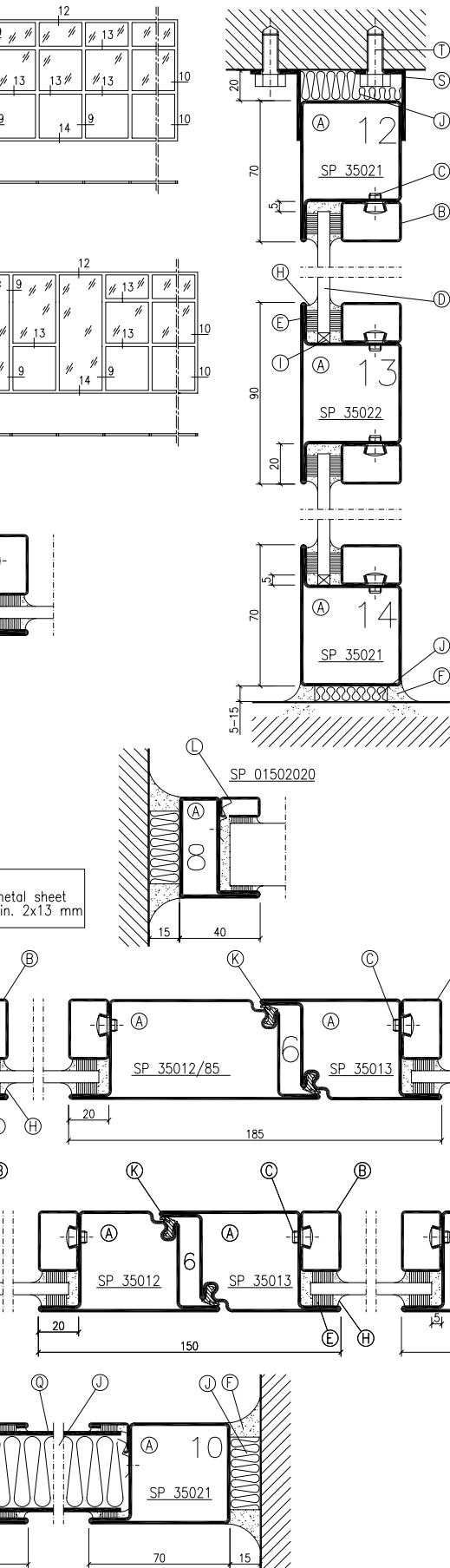


All approved profiles are suitable for round windows

The design also applies for windows



EXTRACT FROM DOCUMENTATION IFCA-06228 FOR FIRE RESISTANCE 60/0 ACC BS 476:22



NO	ITEM	MATERIAL	REMARK
A	System, SP 35000	Cold formed steel profiles Material thickness 1,5 mm	Steel surface suitable for laquering
B	Glazing beads System SP 40000	Sheet metal, ST, 0,2 Sendzimirband Z 275 Material thickness 1,25 mm	Glazing beads can if necessary be screwed in profile, e.g., for arches and rounded windows. Square tubes can be used as an option to glazing bead.
C	Bead screw SP 40000/90000	Steel L=15mm \varnothing =4,8mm	C/C max 300 mm
D	Panes		
E	Glazing band		
F	Edge sealant		
H	Top sealant		See installation instructions
I	Distance block	See installation instructions	
J	Insulation	Rock wool	Alt. Ceramic band
K	Rubber gasket SP 40035	Chloroprene	C/C max 300 mm
L	Spring / Screw	Steel	
M	Stop bolt	Angle steel	
N	Insulation	Promatec	
O	Stop bolt	Tube	
P	Rubber gasket		
Q	Sheet metal	Thickness min 1,5 mm	
R	Steel pivot	Steel min \varnothing 8	C/C max 600 mm
S	Longitudinal profile	Steel min 40 x 25 x 2	
T	Attaching bolt	Steel \varnothing min 8	C/C max 600 mm
U	Gypsum	2x13 mm	Technical Approved and under fabrication control
V	Intumescent strip	Fire expanding 12x3	
X	Rubber seal SP 45065	Rubber	
Y	Flat steel 30x2	Steel	Attaching SP 45065
Z	Rubber seal SP 40052	Chloroprene	Finger trap proof gasket
Å	Flat steel	Steel 20x2	Attaching SP 40052

WITH OUR TESTED FIRE RESISTANT PROFILE SYSTEMS WE HAVE **DOCUMENTATION AND REPORTS** THAT VALIDATE FULFILMENT OF REQUIREMENTS ACCORDING VARIOUS **NATIONAL AND INTERNATIONAL STANDARDS**

Assessment Report IFCA/06228
 Glazed screens, single & double leaf doorsets constructed out of Stålfprofil system SP 35000 steel & SP 95000 stainless steel sections in accordance with BS476: Part 22: 1987 for 60 minutes

SYSTEM SP 35000/SP 95000
 Typical Door & Screen Construction

Job number : 7791

Drawn by : CSP | Checked by : CM

Not To Scale | November 2006

06228/01